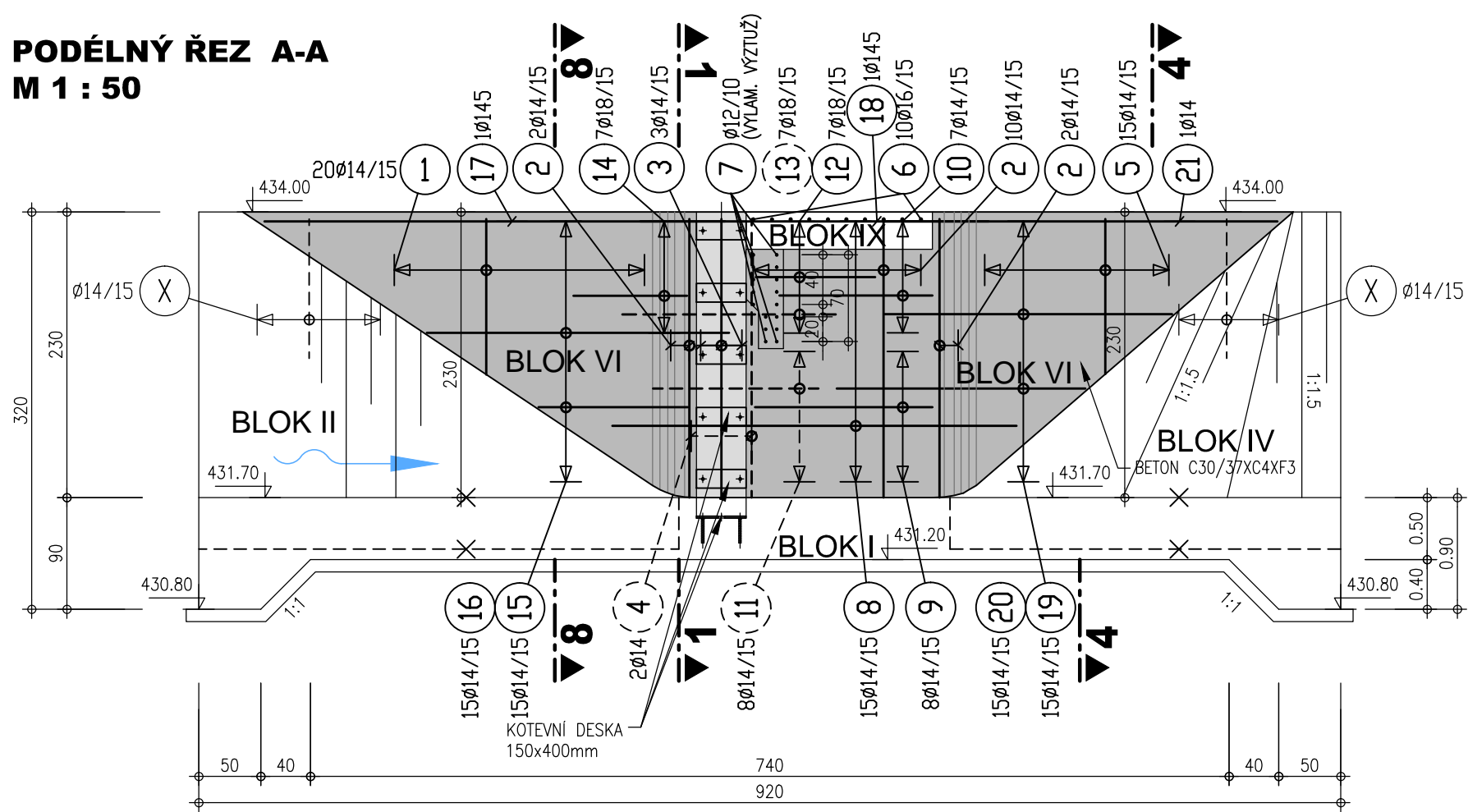
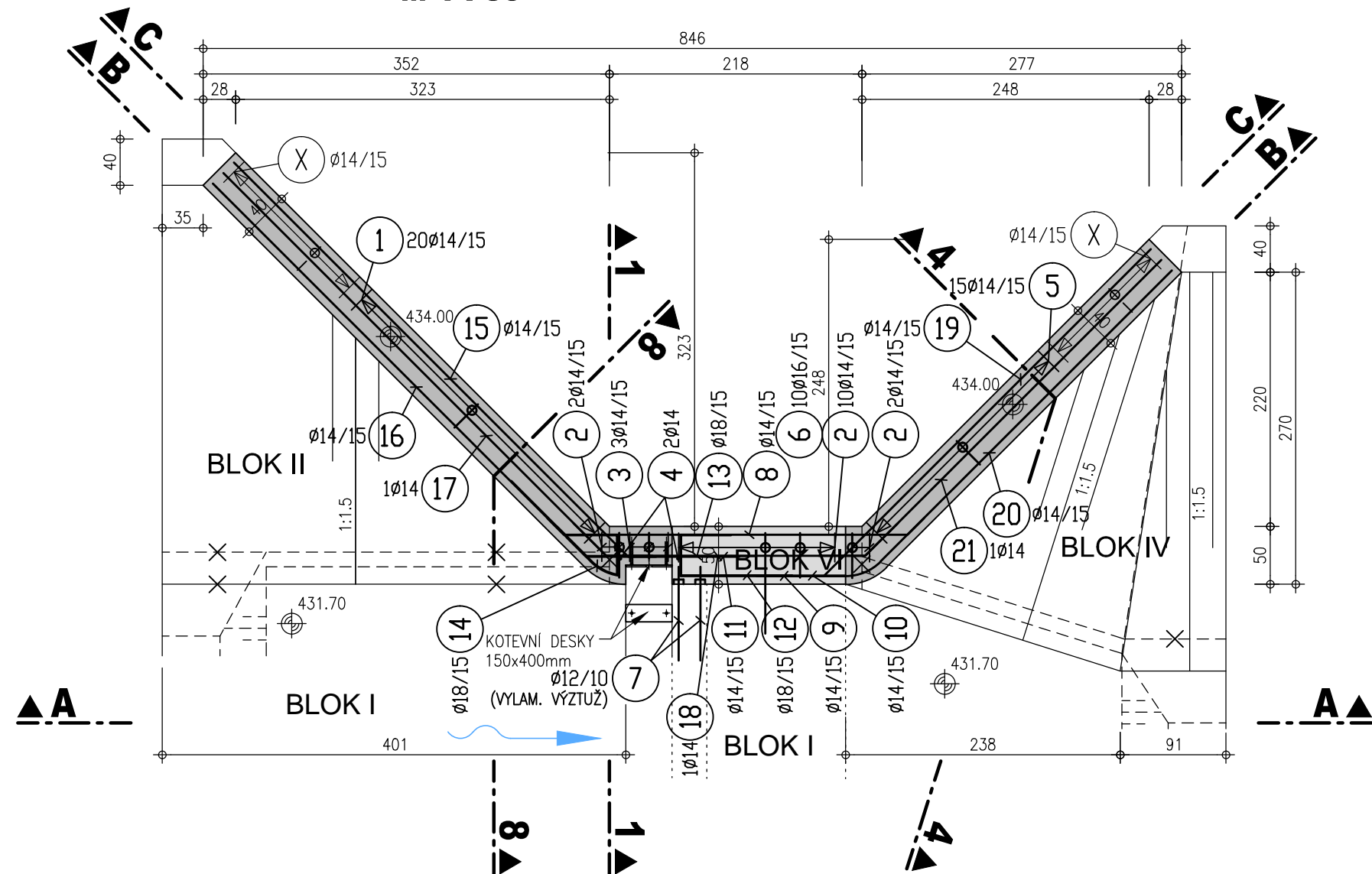


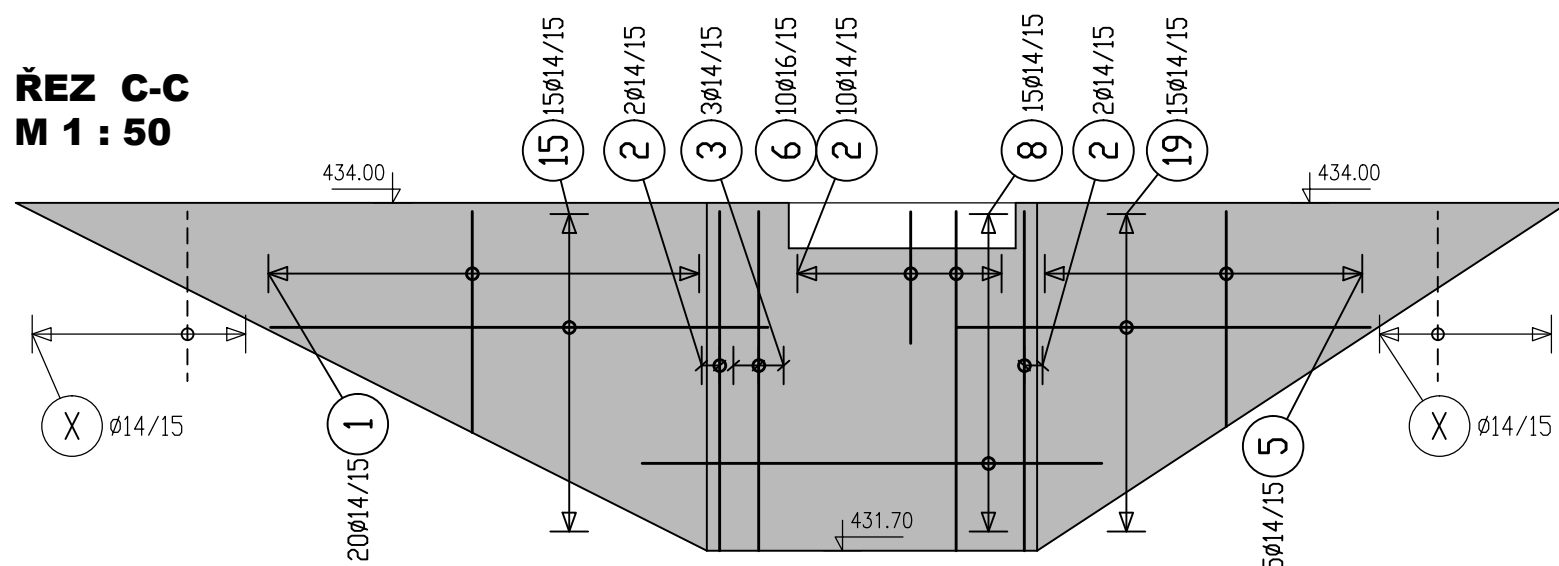
PODÉLNÝ ŘEZ A-A  
M 1 : 50



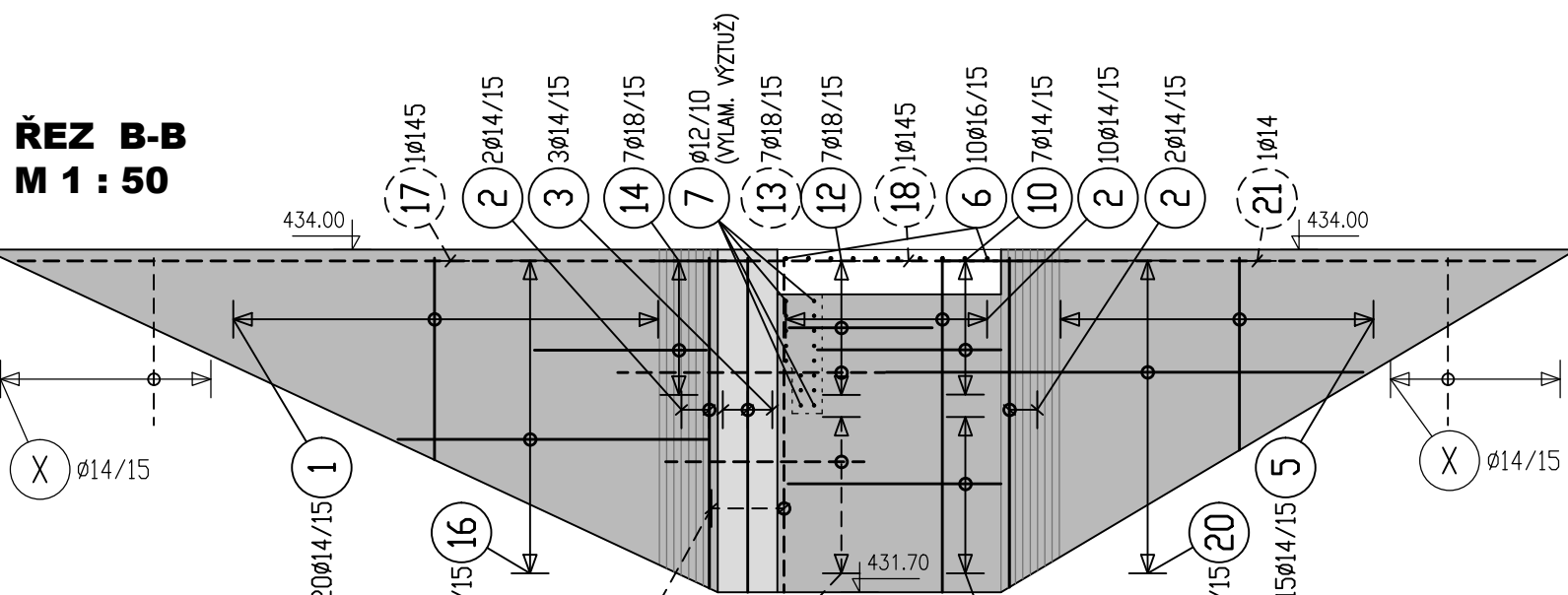
PŮDORYS  
M 1 : 50



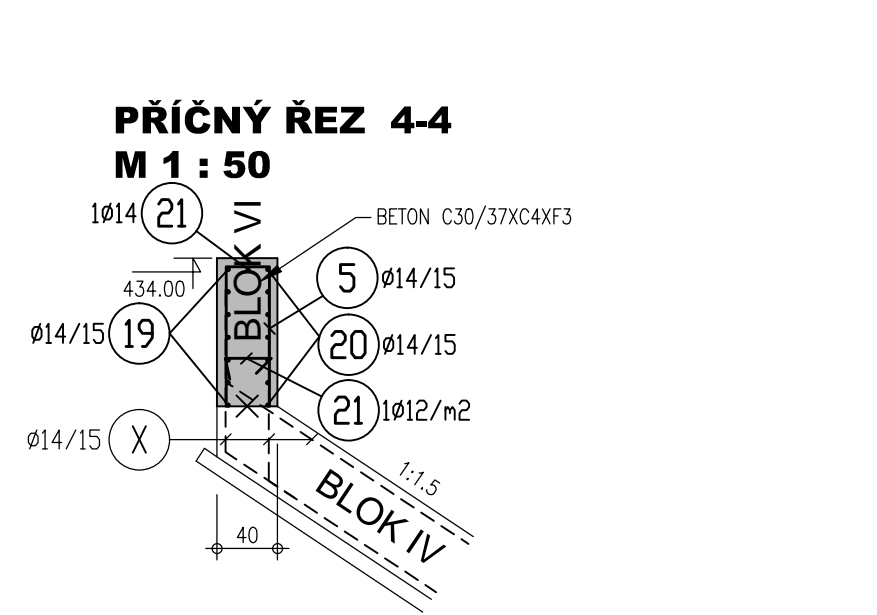
ŘEZ C-C  
M 1 : 50



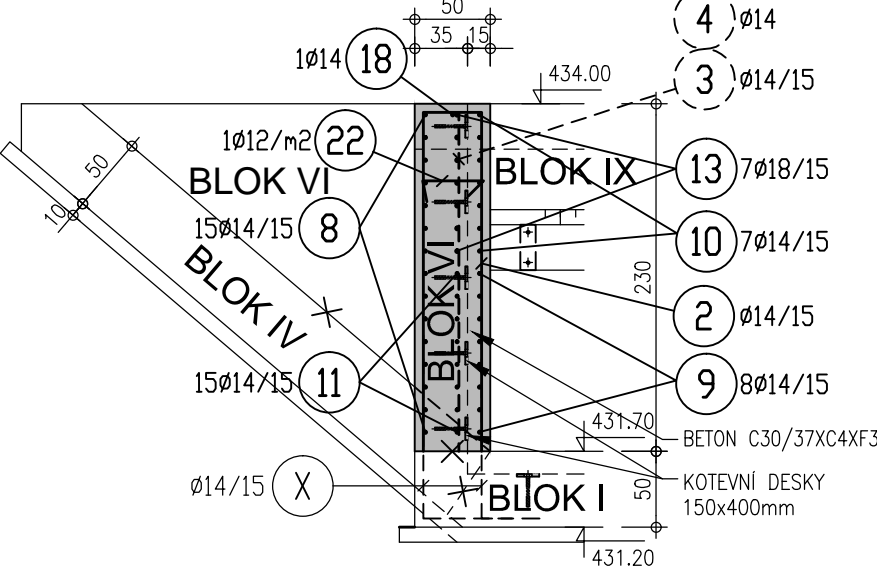
ŘEZ B-B  
M 1 : 50



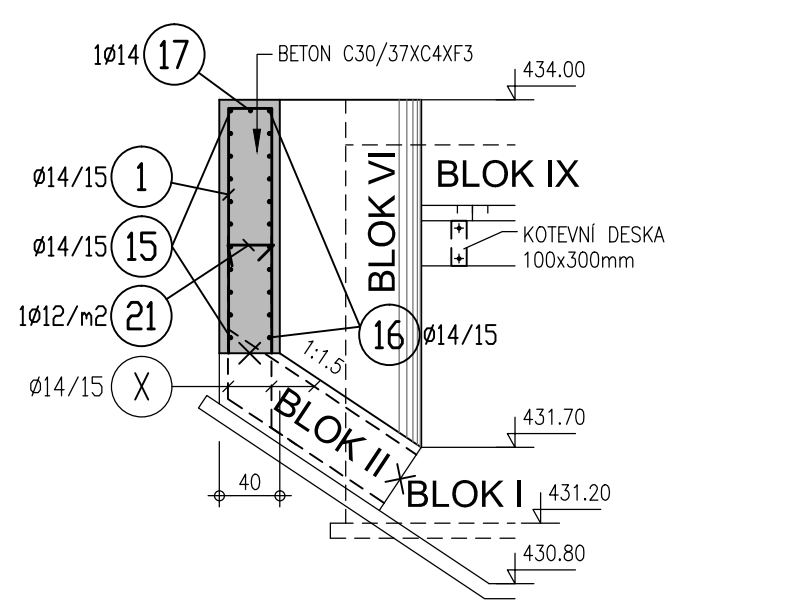
PŘÍČNÝ ŘEZ 4-4  
M 1 : 50



PŘÍČNÝ ŘEZ 1-1  
M 1 : 50



PŘÍČNÝ ŘEZ 8-8  
M 1 : 50



1 20Ø14/15 l=1.78-4.54m

Pol	ks	-X-	-Y-	Dl. lks
a	1	72	78	178
b	1	79	86	193
c	1	86	93	207
d	1	93	101	222
e	1	100	108	236
f	1	107	116	251
g	1	114	123	265
h	1	121	131	280
i	1	128	138	294
j	1	135	146	309
k	1	142	153	323
l	1	149	161	338
m	1	156	168	352
n	1	163	176	367
o	1	170	183	381
p	1	177	191	396
q	1	184	198	410
r	1	191	206	425
s	1	198	213	439
t	1	205	221	454

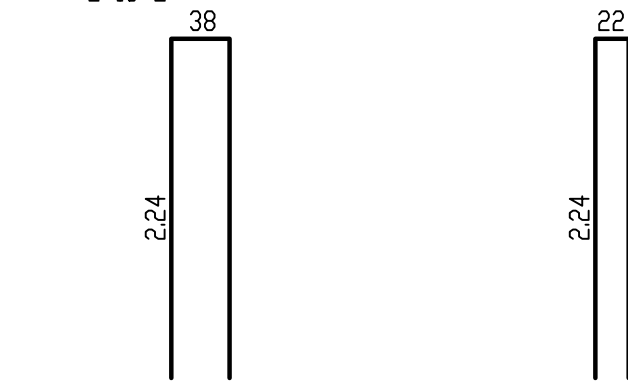
Pozn.: Délky v cm.

5 15Ø14/15 l=1.86-4.50m

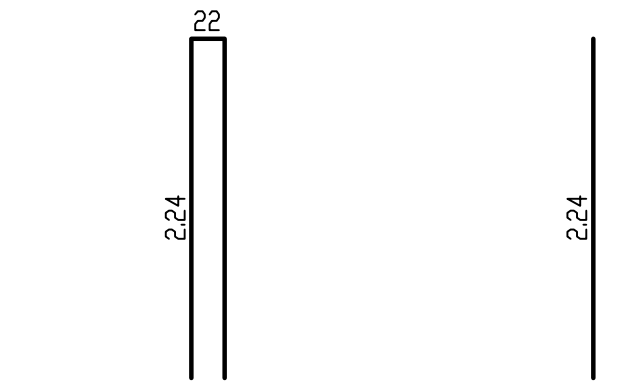
Pol	ks	-X-	-Y-	Dl. lks
a	1	75	83	186
b	1	84	93	205
c	1	93	103	224
d	1	102	113	243
e	1	111	123	262
f	1	120	133	281
g	1	129	142	299
h	1	138	152	318
i	1	147	162	337
j	1	156	172	356
k	1	165	182	375
l	1	174	191	393
m	1	183	201	412
n	1	192	211	431
o	1	201	221	450

Pozn.: Délky v cm.

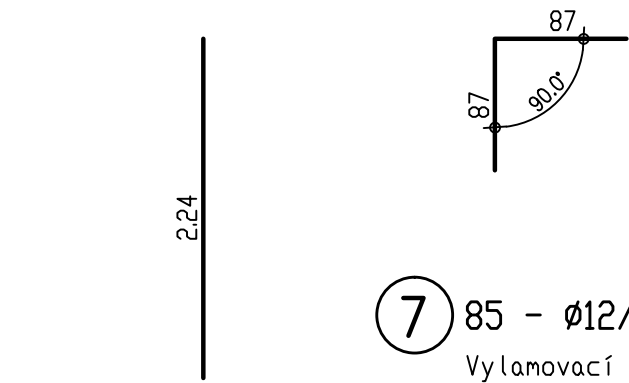
2 14Ø14/15 l=4.86m



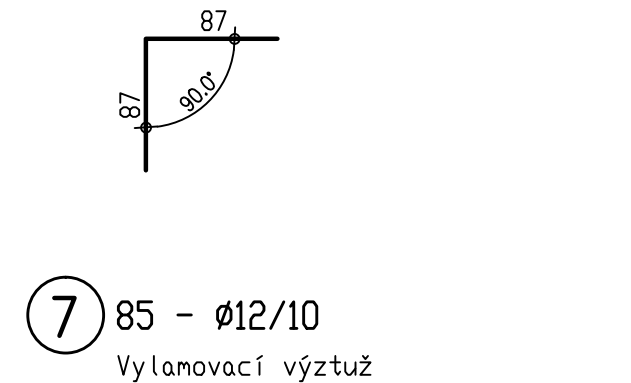
3 3Ø14/15 l=4.70m



4 2Ø14 l=2.24m



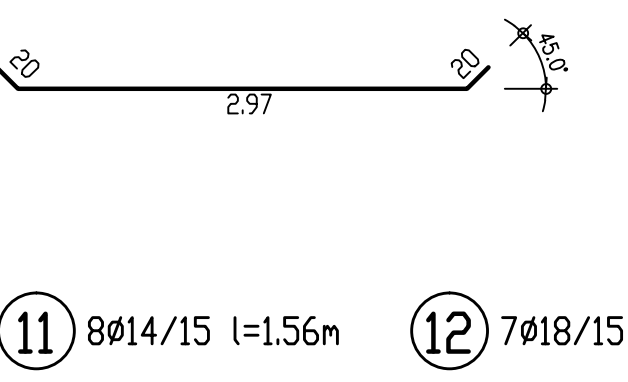
6 10Ø16/15 l=1.74m



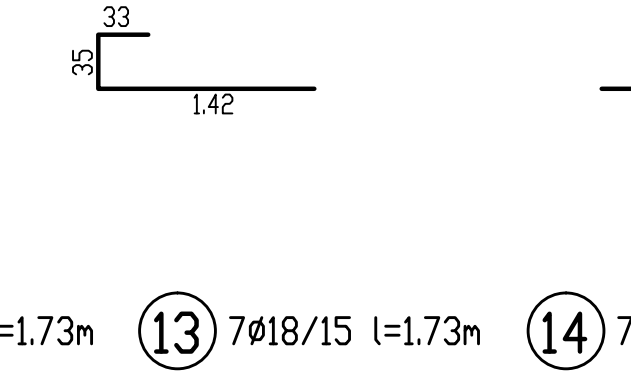
7 85 - Ø12/10

Vylamovací výztuž (viz výkres)

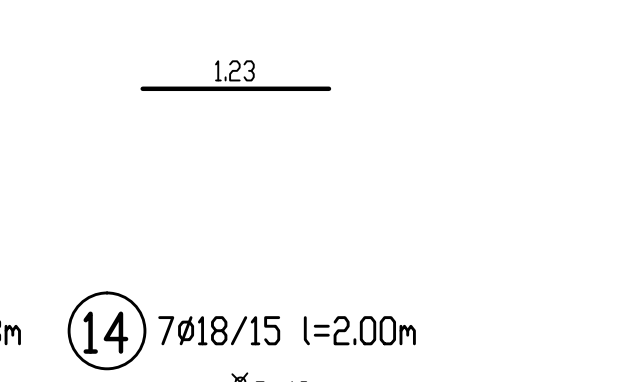
8 15Ø14/15 l=3.37m



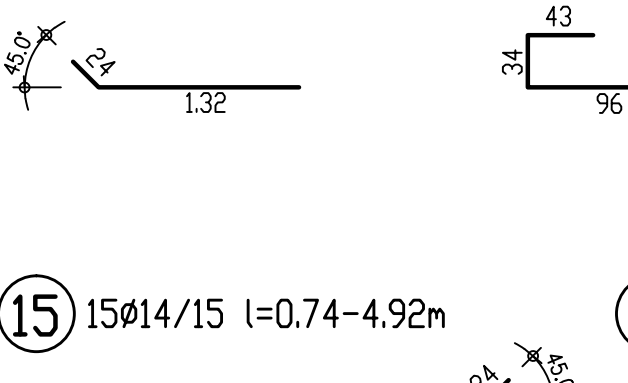
9 8Ø14/15 l=2.10m



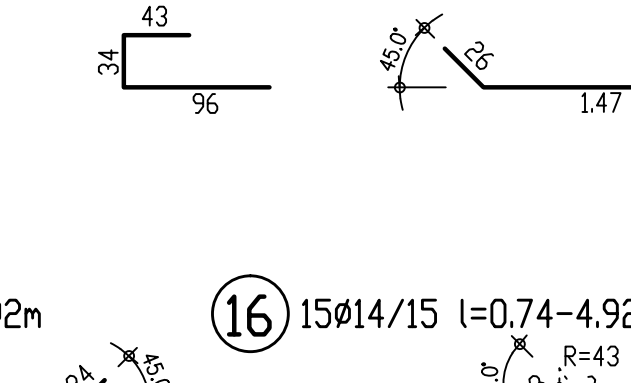
10 7Ø14/15 l=1.23m



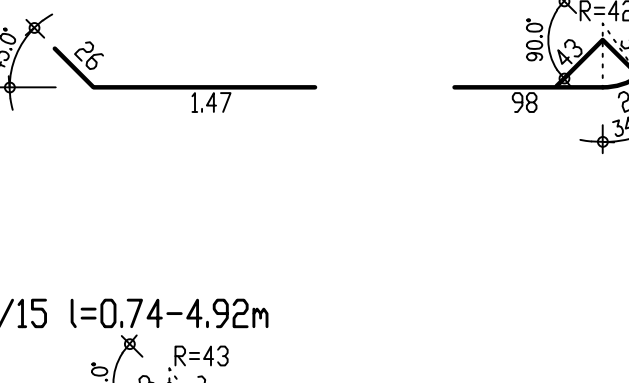
11 8Ø14/15 l=1.56m



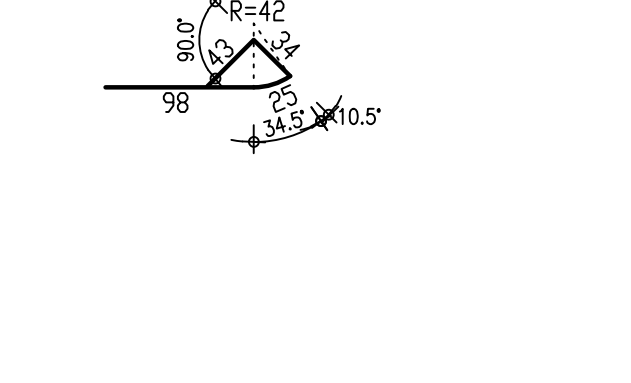
12 7Ø18/15 l=1.73m



13 7Ø18/15 l=1.73m



14 7Ø18/15 l=2.00m



15 15Ø14/15 l=0.74-4.92m

Pol	ks	-X-	Dl. lks
a	1	50	74
b	1	80	104
c	1	110	134
d	1	140	164
e	1	170	194
f	1	199	223
g	1	229	253
h	1	259	283
i	1	289	313
j	1	319	343
k	1	349	372
l	1	378	402
m	1	408	432
n	1	438	462
o	1	468	492

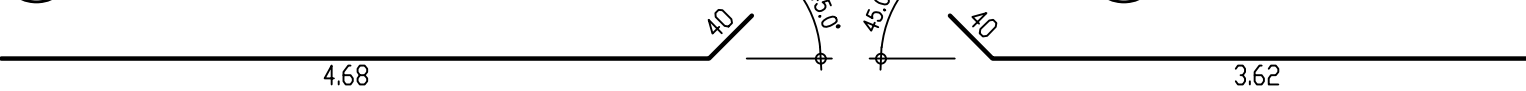
Pozn.: Délky v cm.

16 15Ø14/15 l=0.74-4.92m

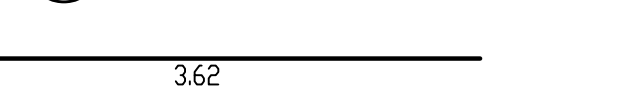
Pol	ks	-X-	Dl. lks
a	1	10	104
b	1	29	123
c	1	61	155
d	1	93	187
e	1	125	219
f	1	158	252
g	1	190	284
h	1	222	316
i	1	254	348
j	1	286	380
k	1	318	412
l	1	350	444
m	1	382	476
n	1	414	508
o	1	447	541

Pozn.: Délky v cm.

17 1Ø14 l=5.08m



21 1Ø14 l=4.02m



19 15Ø14/15 l=0.87-4.08m

Pol	ks	-X-	Dl. lks
a	1	67	87
b	1	90	110
c	1	113	133
d	1	136	156
e	1	159	179
f	1	182	202
g	1	205	225
h	1	228	248
i	1	251	271
j	1	273	293
k	1	296	316
l	1	319	339
m	1	342	362
n	1	365	385
o	1	388	408

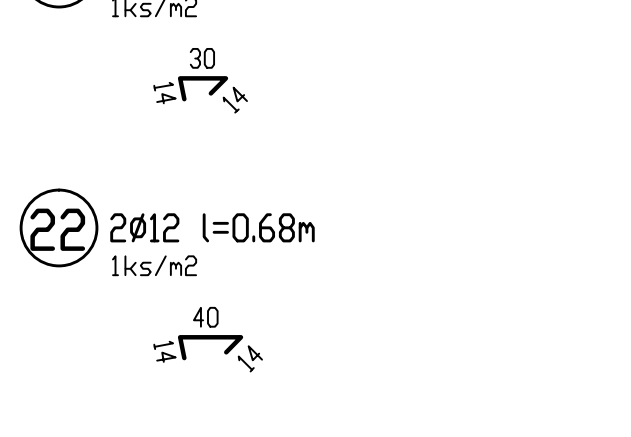
Pozn.: Délky v cm.

20 15Ø14/15 l=1.20-4.54m

Pol	ks	-X-	Dl. lks
a	1	10	120
b	1	17	127
c	1	42	152
d	1	67	177
e	1	92	202
f	1	117	227
g	1	142	252
h	1	168	278
i	1	193	303
j	1	218	328
k	1	243	353
l	1	268	378
m	1	294	404
n	1	319	429
o	1	344	454

Pozn.: Délky v cm.

22 2Ø12 l=0.68m



VYPIS VÝZTUŽE							
Pol	pr mm	ks	délka m	12	14	16	18
1	14	20	viz výk		63.20		
2	14	14	4.86		68.04		
3	14	3	4.70		14.10		
4	14	2	2.24		4.48		
5	14	15	viz výk		47.72		
6	16	10	1.74			17.40	
7	12/10	3	(Vylamovací výztuž - dl.	70cm,			
8	14	15		40cm,	20cm)		
9	14	8	2.10		50.55		
10	14	7	1.23		16.80		
11	14	8	1.56		8.61		
12	18	7	1.73		12.48		12.11
13	18	7	1.73				12.11
14	18	7	2.00				14.00
15	14	15	viz výk		42.45		
16	14	15	viz výk		47.49		
17	14	1	5.08		5.08		
18	14	1	3.04		3.04		
19	14	15	viz výk		37.14		
20	14	15	viz výk		41.84		
21	14	1	4.02		4.02		
22	12	10	0.58	5.80			
23	12	2	0.68	1.36			
	pr	kg/mb	Celk. délka (m)		Hmotnost(kg)		
	12	0.888	7.16		6.4		
	14	1.210	467.04		565.1		
	16	1.580	17.40		27.5		
	18	2.000	38.22		76.4		
CELK. HMOTNOST =					675.4 kg		

POZNÁMKA: Pol. č.7 (vylamovací výztuž) není zahrnuta v celkové hmotnosti

VÝKOVÝ SYSTÉM: BALT p.v.  
KÓTOVÁNO V [cm]

